

**PESO NETTO / NET WEIGHT: 30,00 Kg**

**PCS PALLET: 10**

**PCS PALLET CONTAINER: 20**

**ACCESSORI / ACCESSORIES:**

**PIL01** - Piletta universale click-clack CROMO con coperchio in ceramica / Universal click-clak drain in CHROME with ceramic lid

**PIL01NM** - Piletta universale click-clack NERO MATT con coperchio in ceramica / Universal click-clak drain in MATT BLACK with ceramic lid

**PIL01BR** - Piletta universale click-clack BRONZO con coperchio in ceramica / Universal click-clak drain in BRONZE with ceramic lid

**PIL01CM** - Piletta universale click-clack CEMENTO con coperchio in ceramica / Universal click-clak drain in CEMENTO with ceramic lid

**SISP** - Sifone CROMO / CHROME siphon

**SIFN** - Sifone NERO MATT / MATT BLACK siphon

**SIFBR** - Sifone BRONZO / BRONZE siphon

**SIFCM** - Sifone CEMENTO / CEMENTO siphon

**NOTE / NOTES**

Disponibile nell'opzione senza foro rubinetto (art. ERLA120SF).

Available the option without tap hole (art. ERLA120SF).



DoP No. 14688.01

**FINITURE LAVABO**

WASHBASIN FINISHES

**Essential colors**

● Bianco/white - glossy

**Le Terre di Cielo**

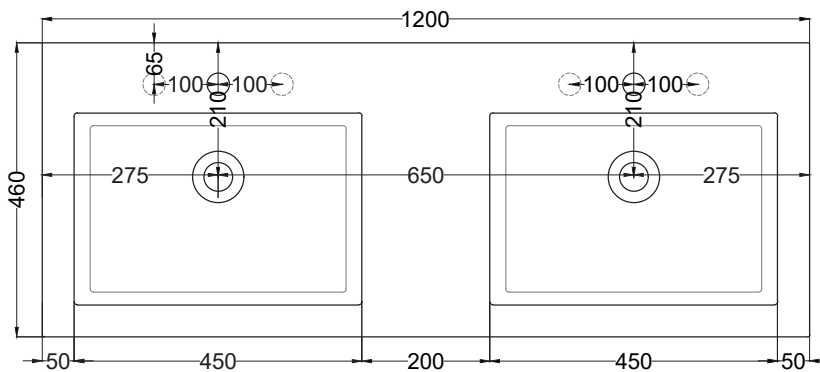
- |           |            |           |
|-----------|------------|-----------|
| ● Talco   | ● Fango    | ● Agave   |
| ● Pomice  | ● Cacao    | ● Muschio |
| ● Brina   | ● Arenaria | ● Polvere |
| ● Basalto | ● Avena    | ● Cipria  |
| ● Lavagna | ● Lino     | ● Canapa  |
| ● Cemento |            |           |

**FINITURE STRUTTURA**

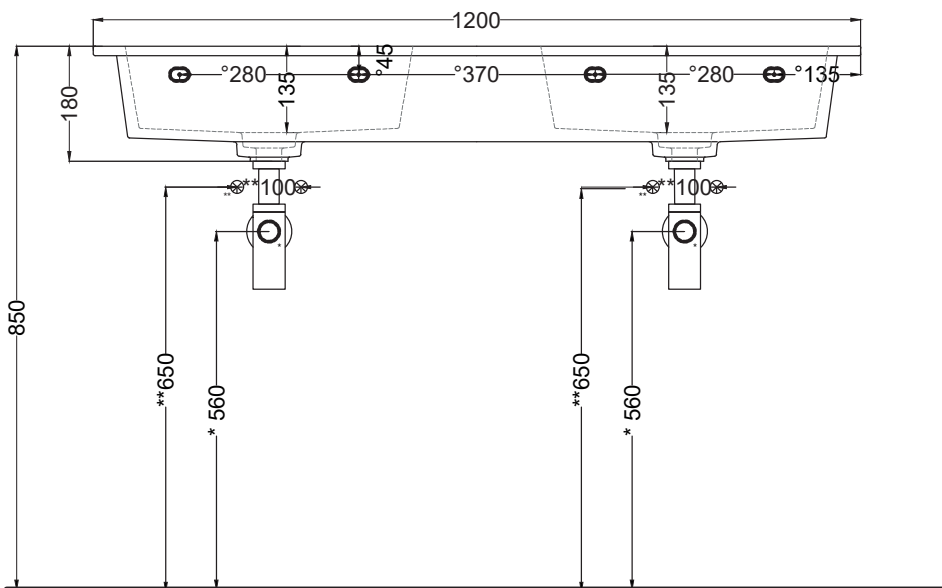
FRAMEWORK FINISHES

● Nero Matt/matt black

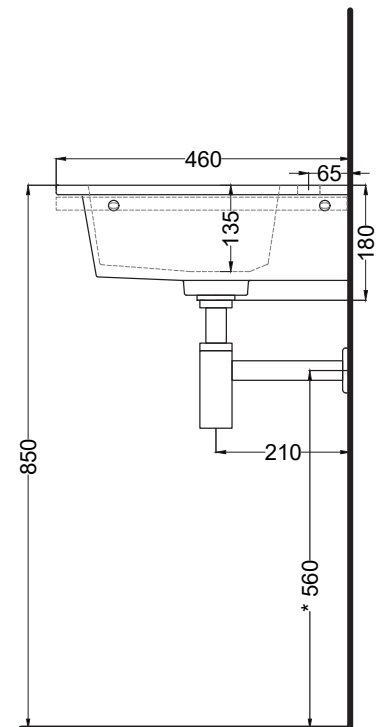
● Cemento



TOP



FRONT



SIDE

\* WATER OUTLET WITH SISP/SIFN/SIFBR/SIFCM  
\*\* WATER INLET (HOT-COLD)  
\* WALL FIXINGS

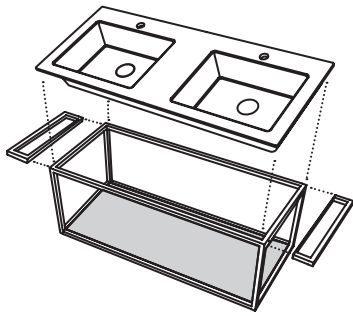
**ATTENZIONE:**

Le misure d'installazione possono presentare leggere differenze rispetto ai pezzi reali in considerazione delle caratteristiche del prodotto ceramico. L'azienda si riserva di cambiare schede tecniche e caratteristiche di funzionamento degli articoli in ogni momento e senza necessità di preavviso. I pesi possono subire variazioni fino al 20%.

**ATTENTION:**

Measure details can show some little difference respect real items, following typical characteristics of ceramics articles production. The company reserves the right to change any technical specifications/dimension and/or operating characteristics of the products at any time and without giving notice. The ceramic items weight may vary up to 20%.

lavabo sospeso 120 con struttura  
wall-hung washbasin 120 with framework



**PESO NETTO/NET WEIGHT: 30,00 Kg**

**PCS PALLET: 10**

**PCS PALLET CONTAINER: 20**

**ACCESSORI/ACCESSORIES:**

**PILO1** - Piletta universale click-clack CROMO con coperchio in ceramica / Universal click-clack drain in CHROME with ceramic lid

**PILO1NM** - Piletta universale click-clack NERO MATT con coperchio in ceramica / Universal click-clack drain in MATT BLACK with ceramic lid

**PILO1BR** - Piletta universale click-clack BRONZO con coperchio in ceramica / Universal click-clack drain in BRONZE with ceramic lid

**PILO1CM** - Piletta universale click-clack CEMENTO con coperchio in ceramica / Universal click-clack drain in CEMENTO with ceramic lid

**SISP** - Sifone CROMO / CHROME siphon

**SIFN** - Sifone NERO MATT / MATT BLACK siphon

**SIFBR** - Sifone BRONZO / BRONZE siphon

**SIFCM** - Sifone CEMENTO / CEMENTO siphon

**FINITURE LAVABO**

WASHBASIN FINISHES

**Essential colors**

● Bianco/white - glossy

**Le Terre di Cielo**

- |           |            |           |
|-----------|------------|-----------|
| ● Talco   | ● Fango    | ● Agave   |
| ● Pomice  | ● Cacao    | ● Muschio |
| ● Brina   | ● Arenaria | ● Polvere |
| ● Basalto | ● Avena    | ● Cipria  |
| ● Lavagna | ● Lino     | ● Canapa  |
| ● Cemento |            |           |

**FINITURE STRUTTURA**

FRAMEWORK FINISHES

● Nero Matt/matt black

● Cemento

**NOTE/NOTES**

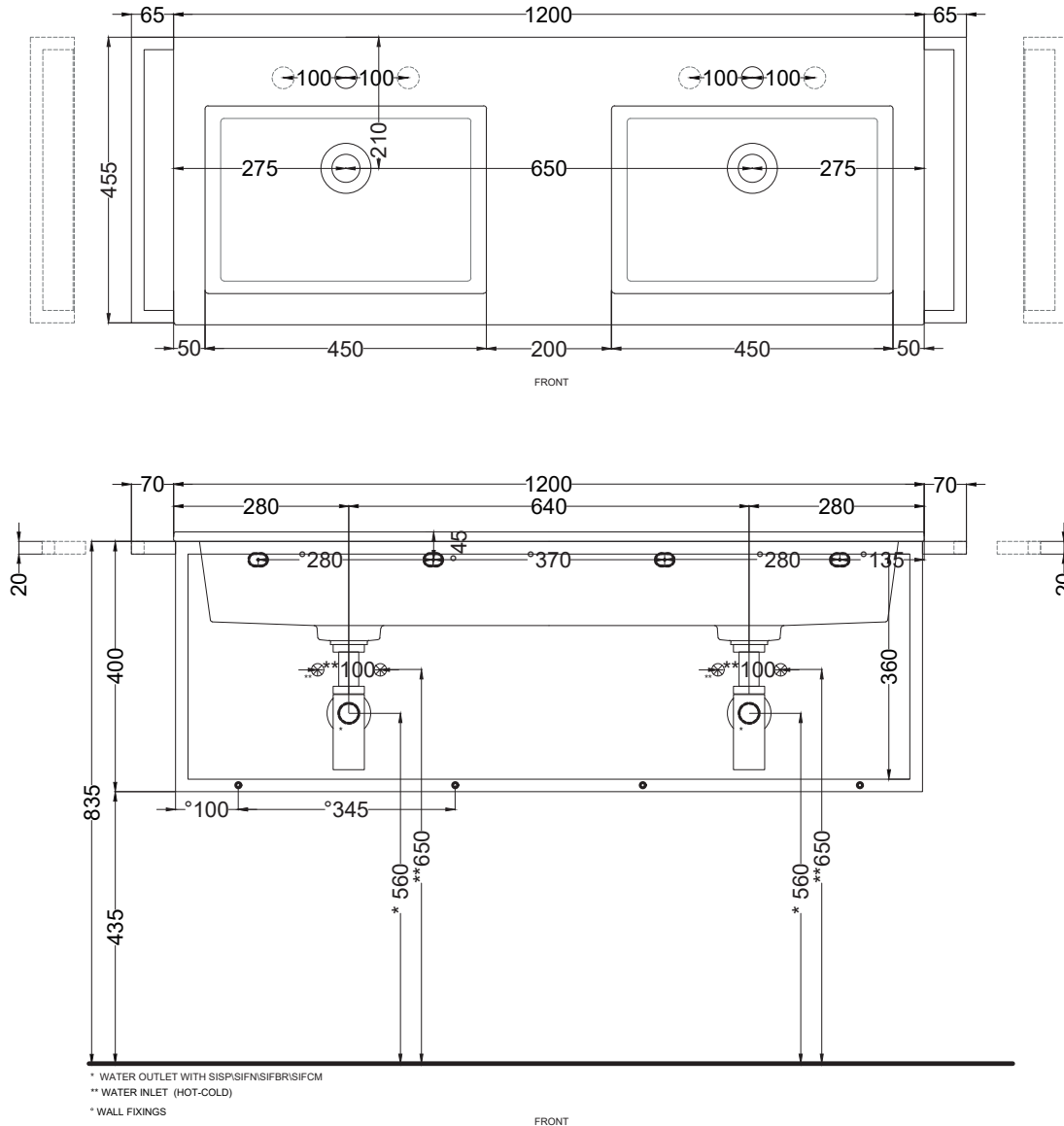
Disponibile nell'opzione senza foro rubinetto (art. ERLA120SF).

Available the option without tap hole (art. ERLA120SF).



DoP No. 14688.01

Luglio 2025



**ATTENZIONE:**

Le misure d'installazione possono presentare leggere differenze rispetto ai pezzi reali in considerazione delle caratteristiche del prodotto ceramico. L'azienda si riserva di cambiare schede tecniche e caratteristiche di funzionamento degli articoli in ogni momento e senza necessità di preavviso. I pesi possono subire variazioni fino al 20%.

**ATTENTION:**

Measure details can show some little difference respect real items, following typical characteristics of ceramics articles production. The company reserves the right to change any technical specifications/dimension and/or operating characteristics of the products at any time and without giving notice. The ceramic items weight may vary up to 20%.